

# Tiered Tank Sewing ePattern

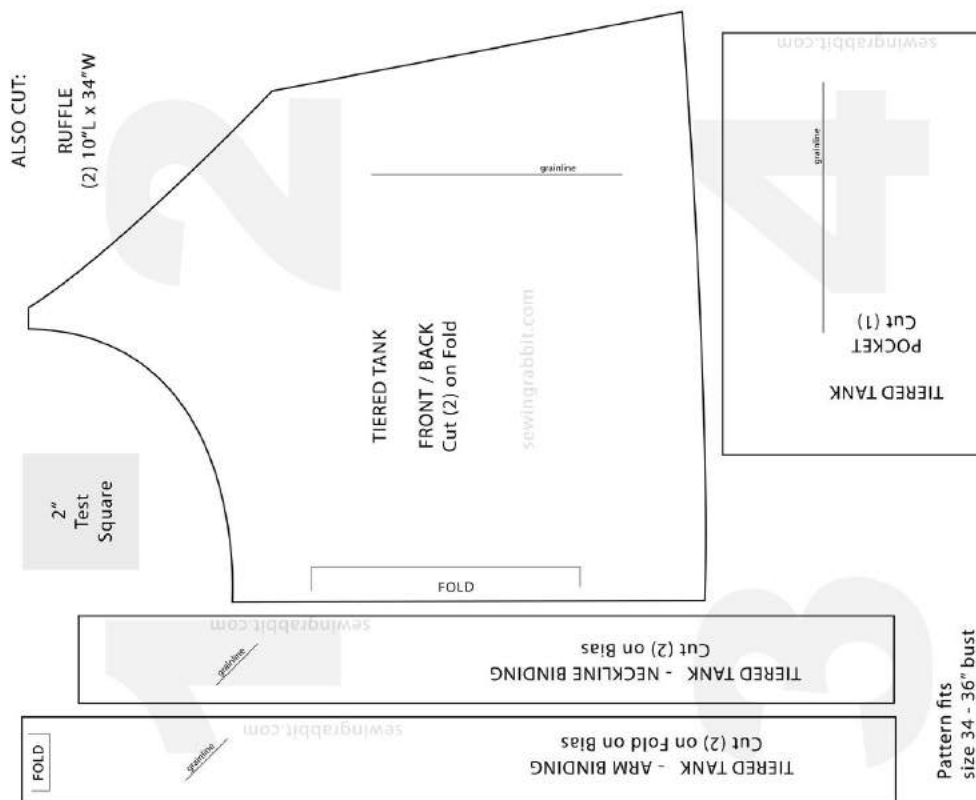
*Fits Sizes 34 - 36 bust*

[www.sewingrabbit.com](http://www.sewingrabbit.com)

## Printing and Piecing Instructions

- All pages should be printed on standard paper. Using Adobe Reader (free to download) is recommended but may not be necessary.
- Make sure that “Auto Rotate and Center” is checked and that “Scaling” is NOT checked (scaling may be in a drop-down menu - make sure to find it and check the setting). If you have a newer version of Adobe Reader, your options might look like “Fit to Size” or “Actual Size”. If that is the case, make sure you choose “Actual Size”.
- To make sure you’re printing the right size pattern, measure the 2 inch test square. Do your troubleshooting here so you don’t print out the wrong size pages.
- If you live outside Canada or the US, print the pages to your standard paper size.
- To connect each page, trim to the grey border (do not cut the grey border off), and match up the numbers of each page with the pattern image diagram below.
- Tape the pages together.
- Once the whole pattern is printed and taped, cut along your size line according to the size chart. You may prefer to trace your size onto tracing paper and then cut it out.

## Pattern Diagram



**Pattern includes a 1/2" seam allowance.**

FOLD

2"  
Test  
Square

grainline

grainline

sewingrabbit.com

sewingrabbit.com

FOLD

TIER  
FROM  
Cut (

ALSO CUT:

RUFFLE  
(2) 10" L x 34" W

RED TANK  
FRONT / BACK  
(2) on Fold



TIERED TANK - ARM BINDING  
Cut (2) on Fold on Bias

TIERED TANK - NECKLINE BINDING  
Cut (2) on Bias

Pattern fits  
size 34 - 36" bust

grainline

**TIERED TANK**

**POCKET  
Cut (1)**

grainline