

Dolman Babydoll Dress ePattern

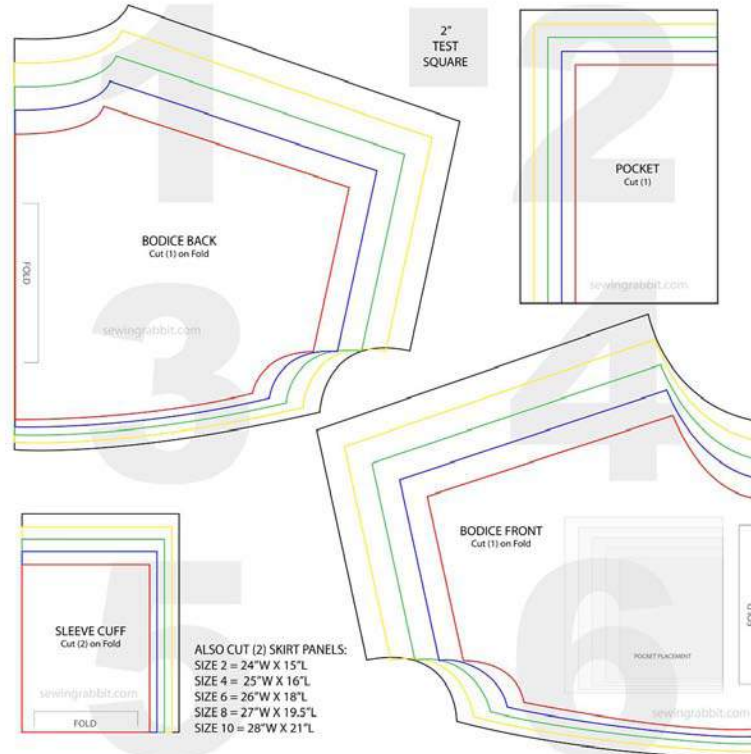
Fits Sizes 2T thru 10

www.sewingrabbit.com

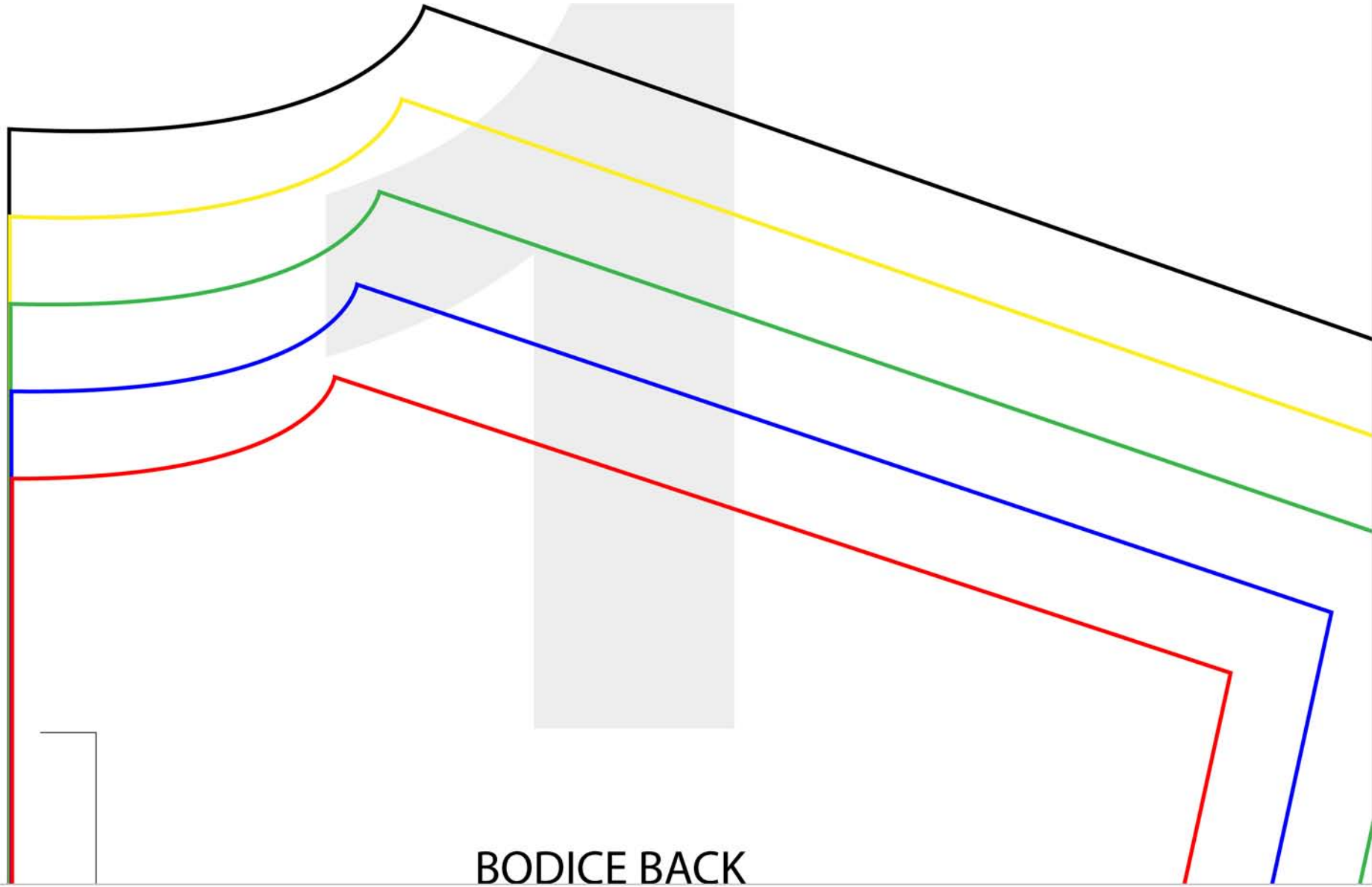
Printing and Piecing Instructions

- All pages should be printed on standard paper. Using Adobe Reader (free to download) is recommended but may not be necessary.
- Make sure that “Auto Rotate and Center” is checked and that “Scaling” is NOT checked (scaling may be in a drop-down menu - make sure to find it and check the setting). If you have a newer version of Adobe Reader, your options might look like “Fit to Size” or “Actual Size”. If that is the case, make sure you choose “Actual Size”.
- To make sure you’re printing the right size pattern, measure the 2 inch test square. Do your troubleshooting here so you don’t print out the wrong size pages.
- If you live outside Canada or the US, print the pages to your standard paper size.
- To connect each page, trim to the grey border (do not cut the grey border off), and match up the numbers of each page with the pattern image diagram below.
- Tape the pages together.
- Once the whole pattern is printed and taped, cut along your size line according to the size chart. You may prefer to trace your size onto tracing paper and then cut it out.

Pattern Diagram

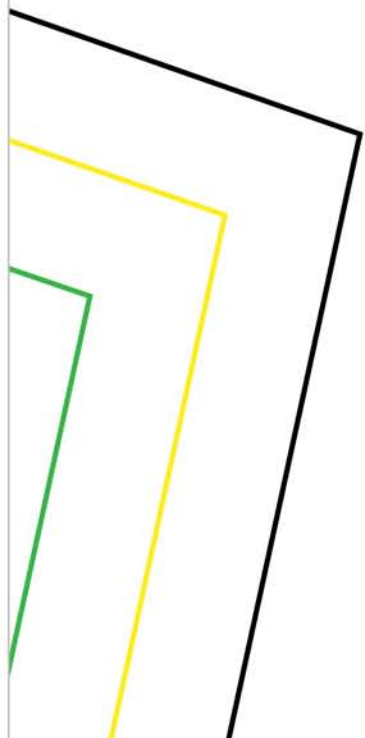
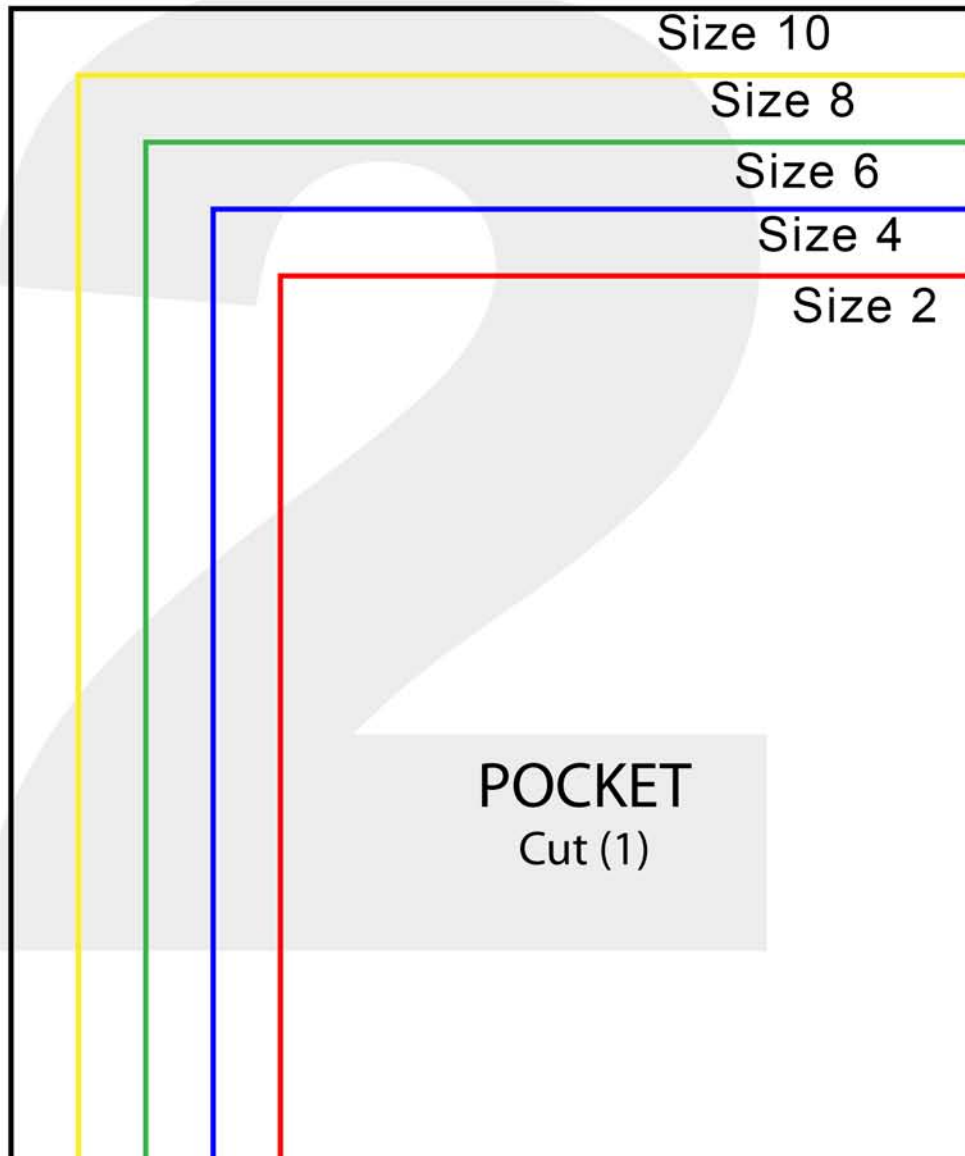


Pattern includes a 1/2" seam allowance.



BODICE BACK

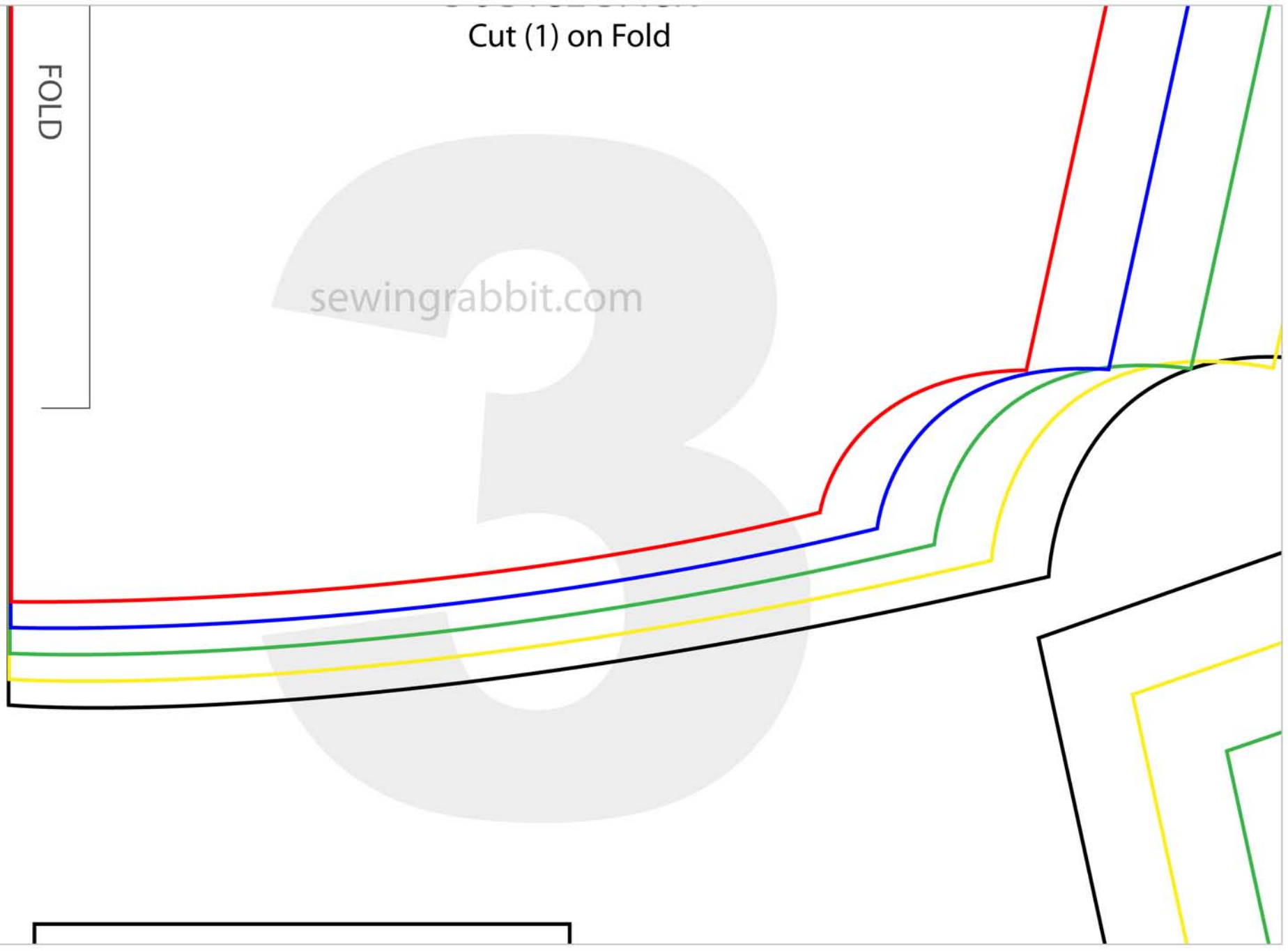
2"
TEST
SQUARE



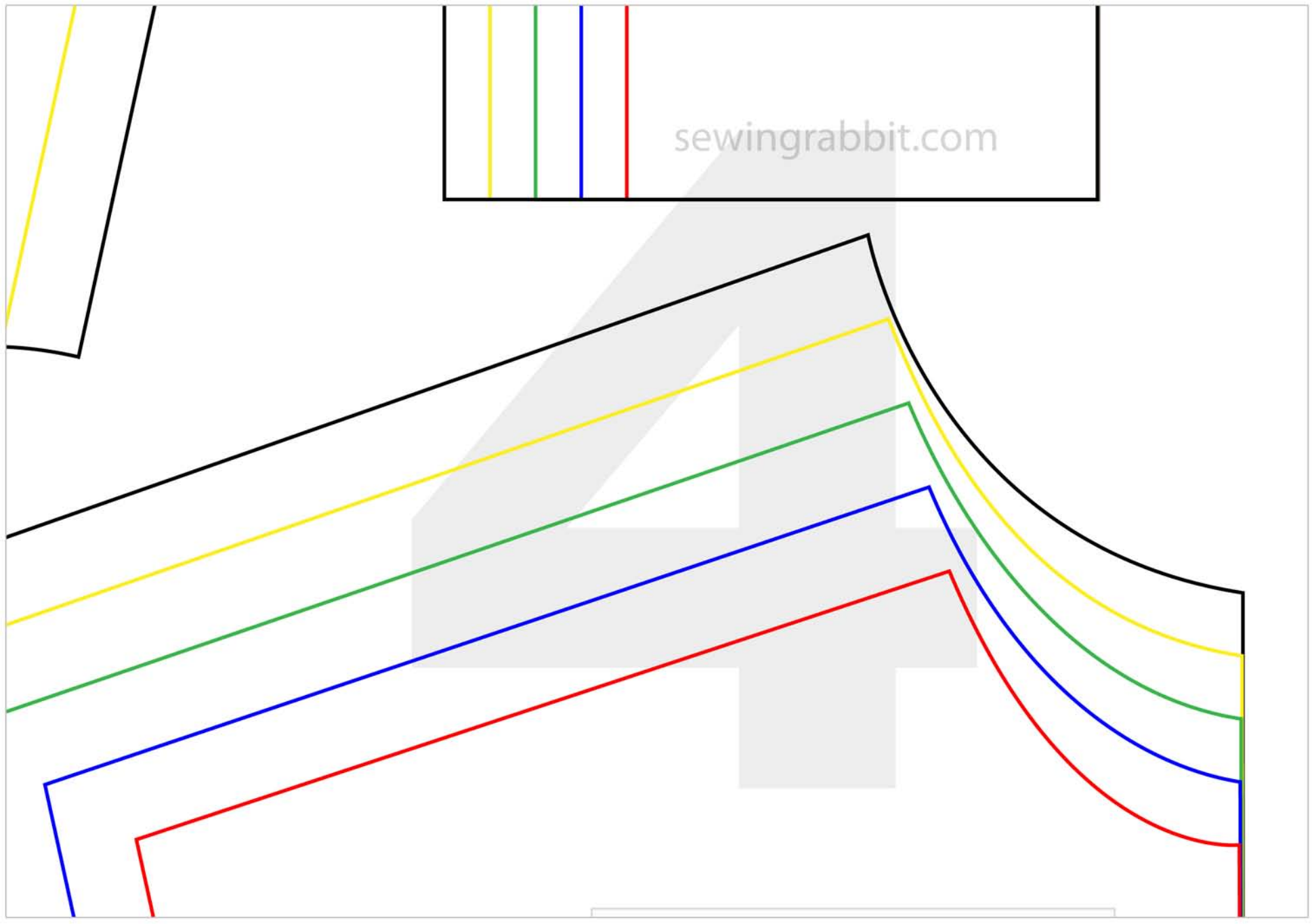
Cut (1) on Fold

FOLD

sewingrabbit.com



sewingrabbit.com



A diagram showing a sleeve cuff pattern. It consists of four nested rectangles. The innermost rectangle is red, followed by blue, green, and yellow. A vertical line is on the right side of the yellow rectangle. A horizontal line is at the bottom of the red rectangle, with the word 'FOLD' centered below it. The text 'SLEEVE CUFF' and 'Cut (2) on Fold' is centered in the red rectangle. The website 'sewingrabbit.com' is written in the bottom left of the red rectangle. To the right of the diagram is a list of skirt panel dimensions for sizes 2, 4, 6, 8, and 10.

SLEEVE CUFF

Cut (2) on Fold

sewingrabbit.com

FOLD

ALSO CUT (2) SKIRT PANELS:

SIZE 2 = 24"W X 15"L

SIZE 4 = 25"W X 16"L

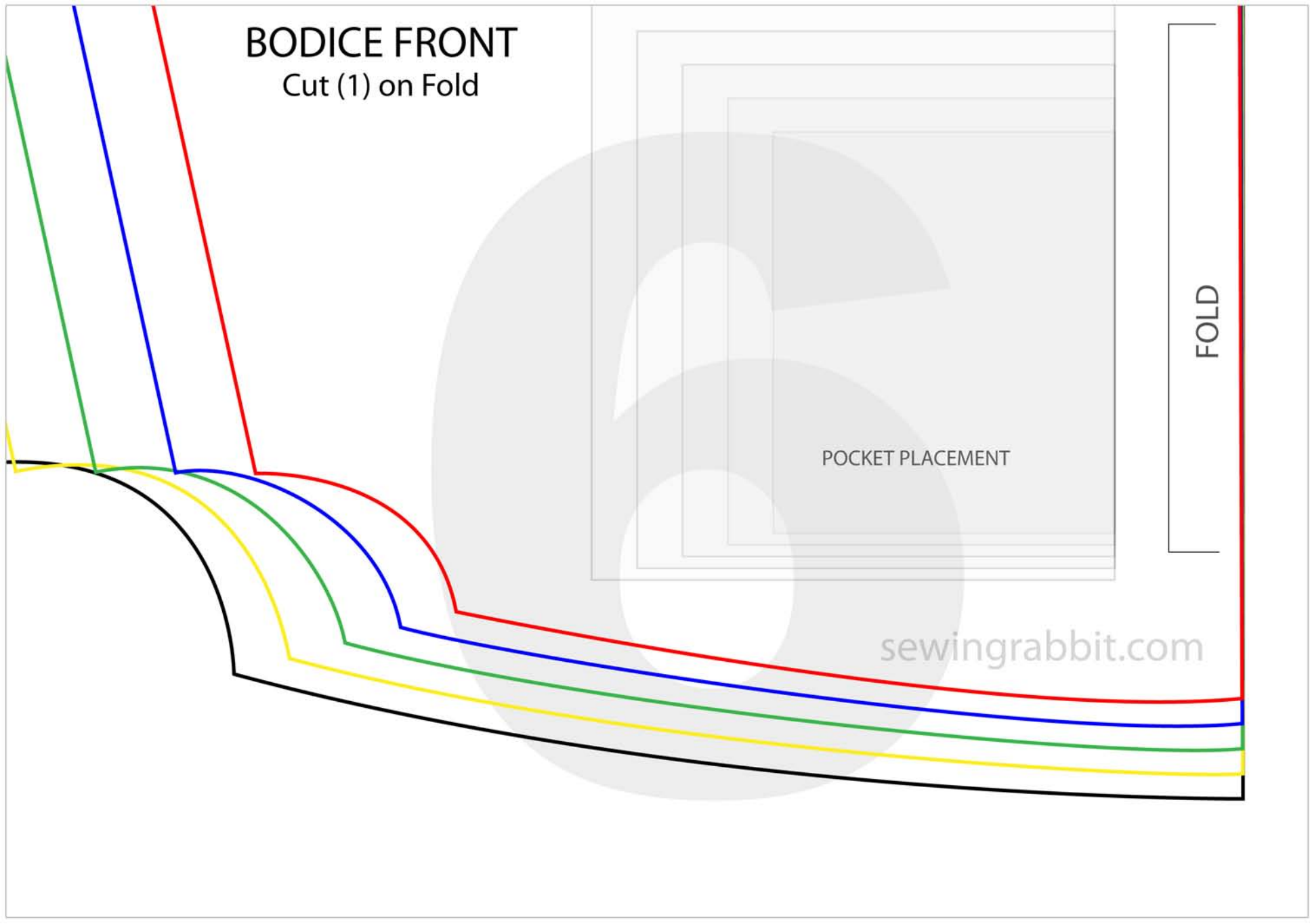
SIZE 6 = 26"W X 18"L

SIZE 8 = 27"W X 19.5"L

SIZE 10 = 28"W X 21"L

BODICE FRONT

Cut (1) on Fold



POCKET PLACEMENT

FOLD

sewingrabbit.com